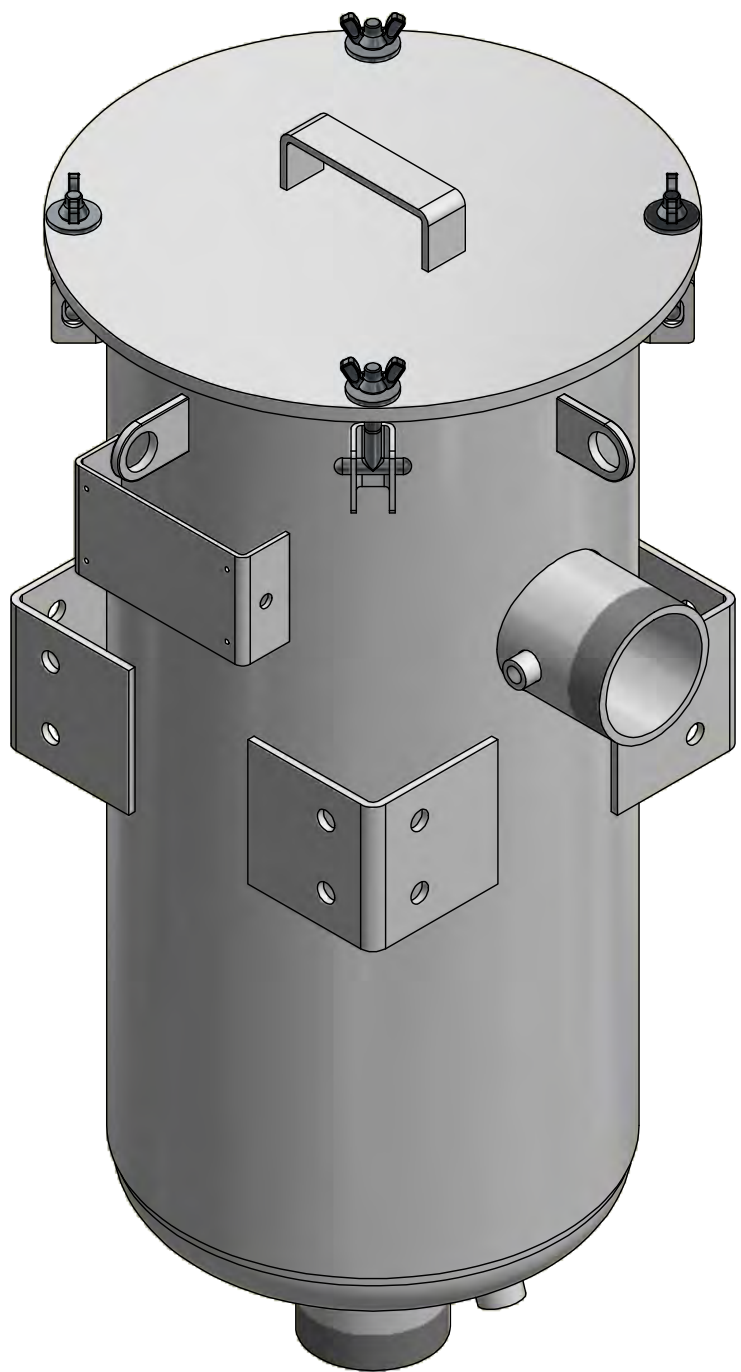
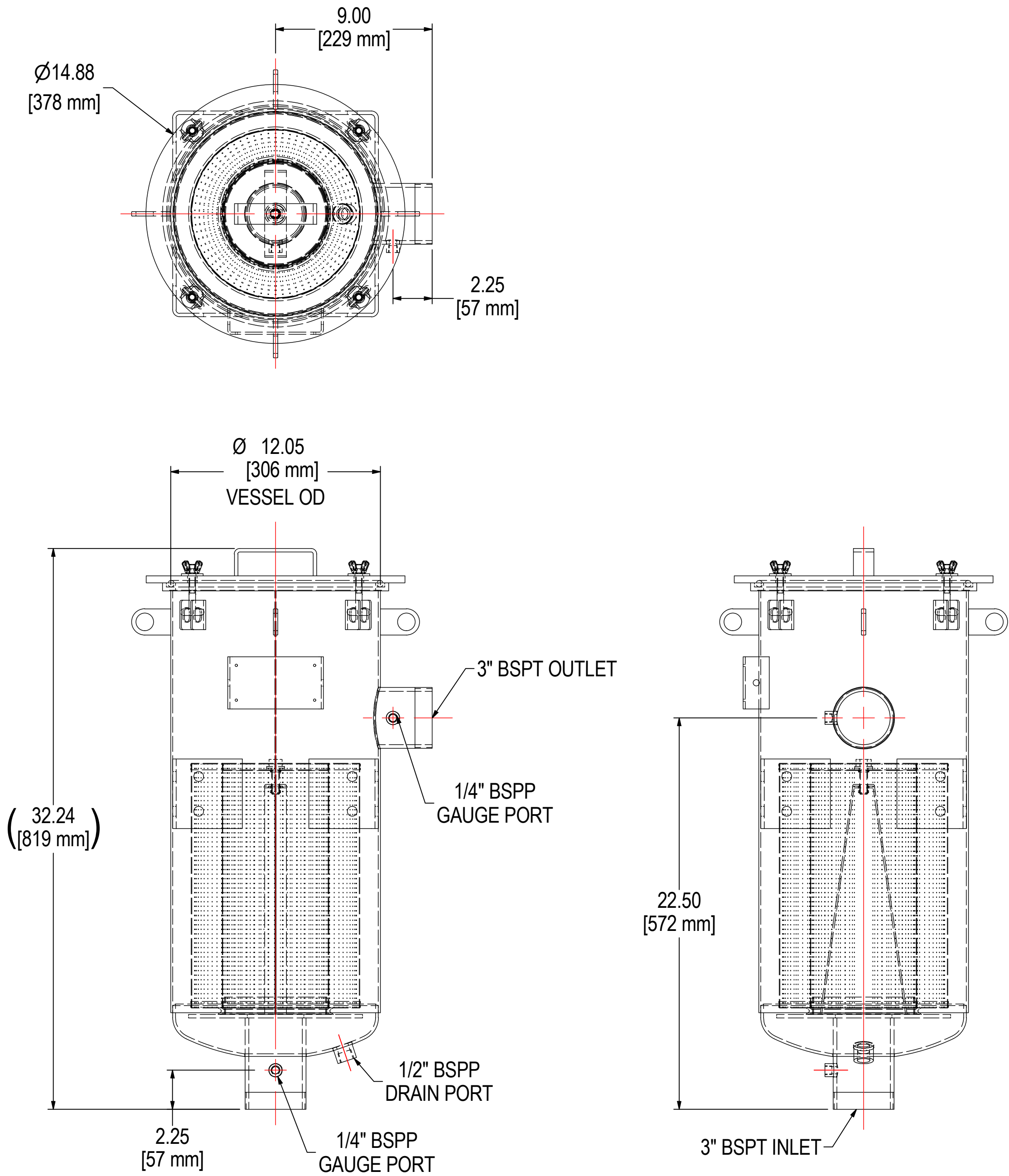


REV	DESCRIPTION	ECN #	CHG BY	DATE	APP'D
A	UPDATED TO CURRENT LAYOUT	17860	NAD	12/03/19	TAS



ELEMENT SPECS		
PART NUMBER	PSG344/2	
MATERIAL	COALESCING	
FLOW RATE	500 CFM	850 m³/hr
SURFACE AREA	-	-
I.D.	6.00"	152mm
O.D.	9.75"	248mm
HEIGHT	14.06"	357mm

MODEL #: HDL-PSG344-2-301		MATERIAL: CARBON STEEL		FINISH: WHITE POWDER	
MODEL NUMBER: HDL-PSG344-2-301					SHEET: 1 OF 1
DESCRIPTION: HDL-PSG344-2-301, WHITE					
PROJECT:		DRAWN BY: DDH DATE: 6/28/2016		APPROVED BY: TAS DATE: 6/28/2016	
				REV: A	



**SOLBERG**

Filtration • Separation • Silencing
630.773.1363 • www.solbergmfg.com

THE INFORMATION CONTAINED HEREIN IS CONFIDENTIAL AND THE PROPERTY OF SOLBERG MANUFACTURING INC. AND IT IS FURNISHED TO YOU WITH THE EXPRESS UNDERSTANDING THAT IT WILL NOT BE REPRODUCED, COPIED IN ANY MANNER, LOANED OR OTHERWISE TRANSFERRED TO OTHERS ENTIRELY OR IN PART, NOR USED FOR ANY PURPOSE OTHER THAN FOR WHICH IT WAS FURNISHED. IT WILL BE RETURNED UPON REQUEST TO SOLBERG MANUFACTURING INC. THE ABOVE RESTRICTION IS IN ADDITION TO, AND DOES NOT IN ANY WAY ALTER, ANY OTHER RESTRICTIONS WHICH MAY APPLY TO THE INFORMATION CONTAINED HEREIN.

**TOLERANCES**  
DIMENSIONS ARE FOR REFERENCE ONLY. ALL DIMENSIONS ARE SUBJECT TO CHANGE UPON PRODUCTION.  
**UNLESS OTHERWISE SPECIFIED:**  
-DIMENSIONS ARE IN INCHES  
-REF: APPROXIMATE DIMENSIONS, NO TOLERANCES APPLY  
-FINISH: BREAK EDGES TO .005-.020 RADIUS/CHAMFER