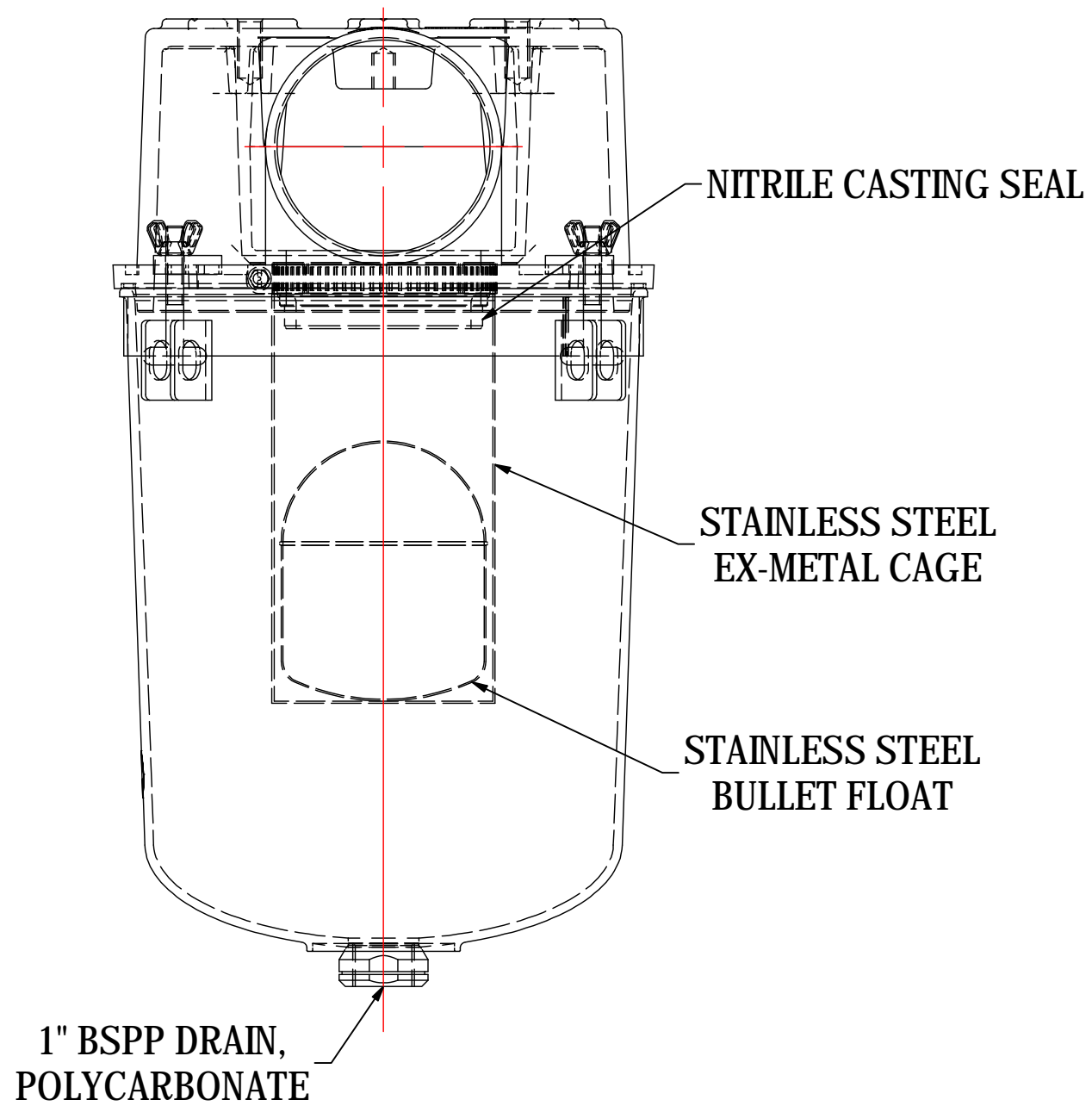
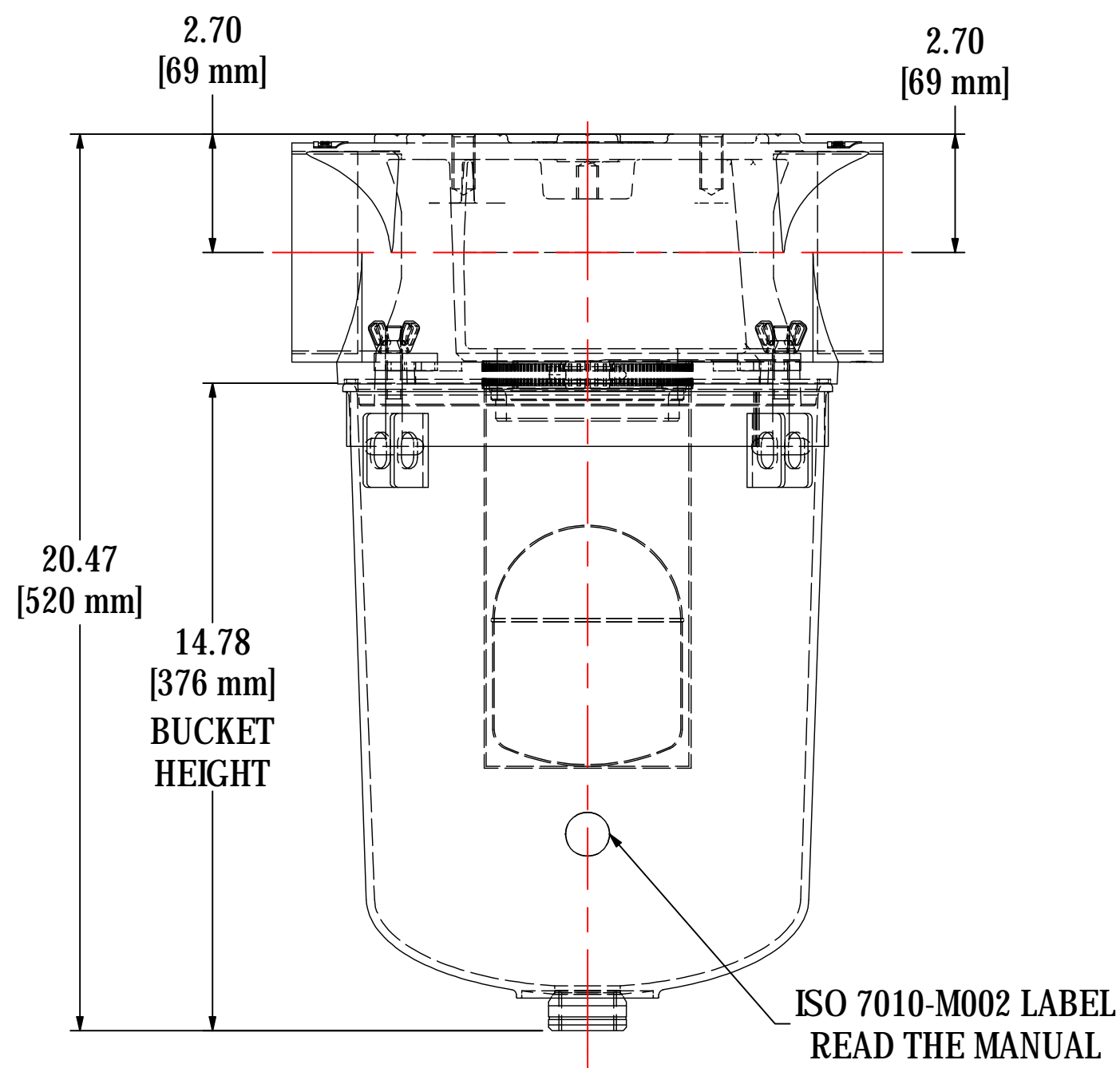
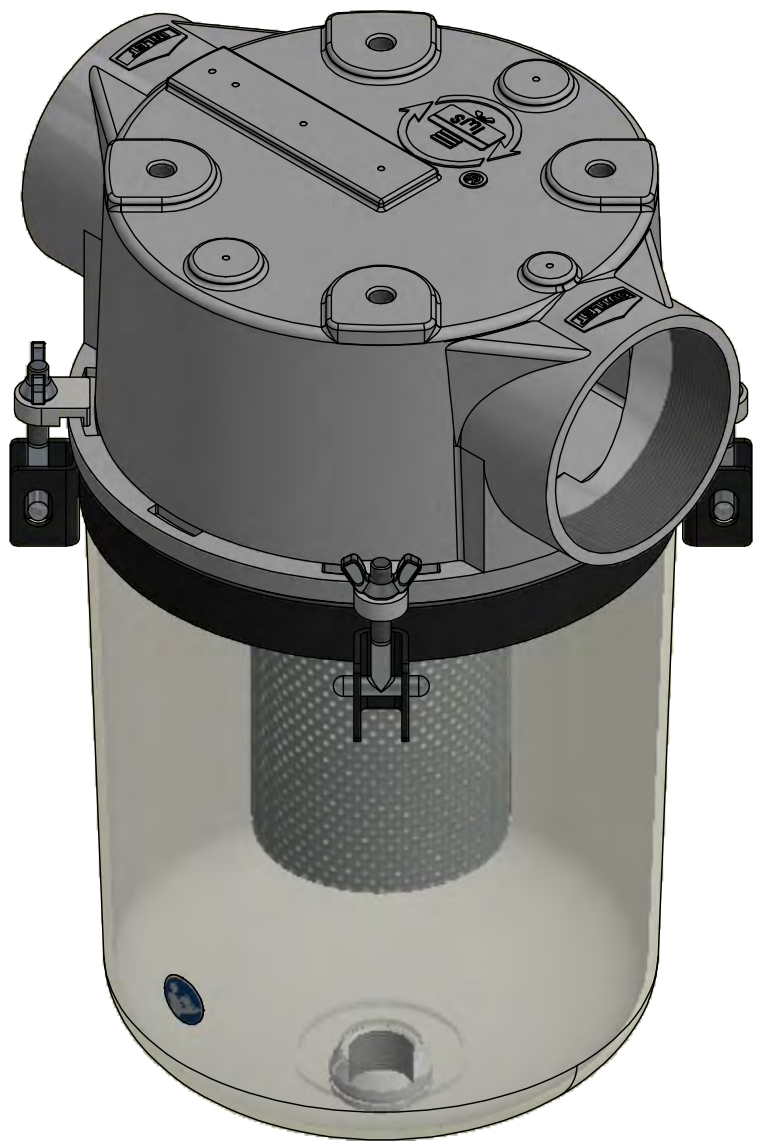
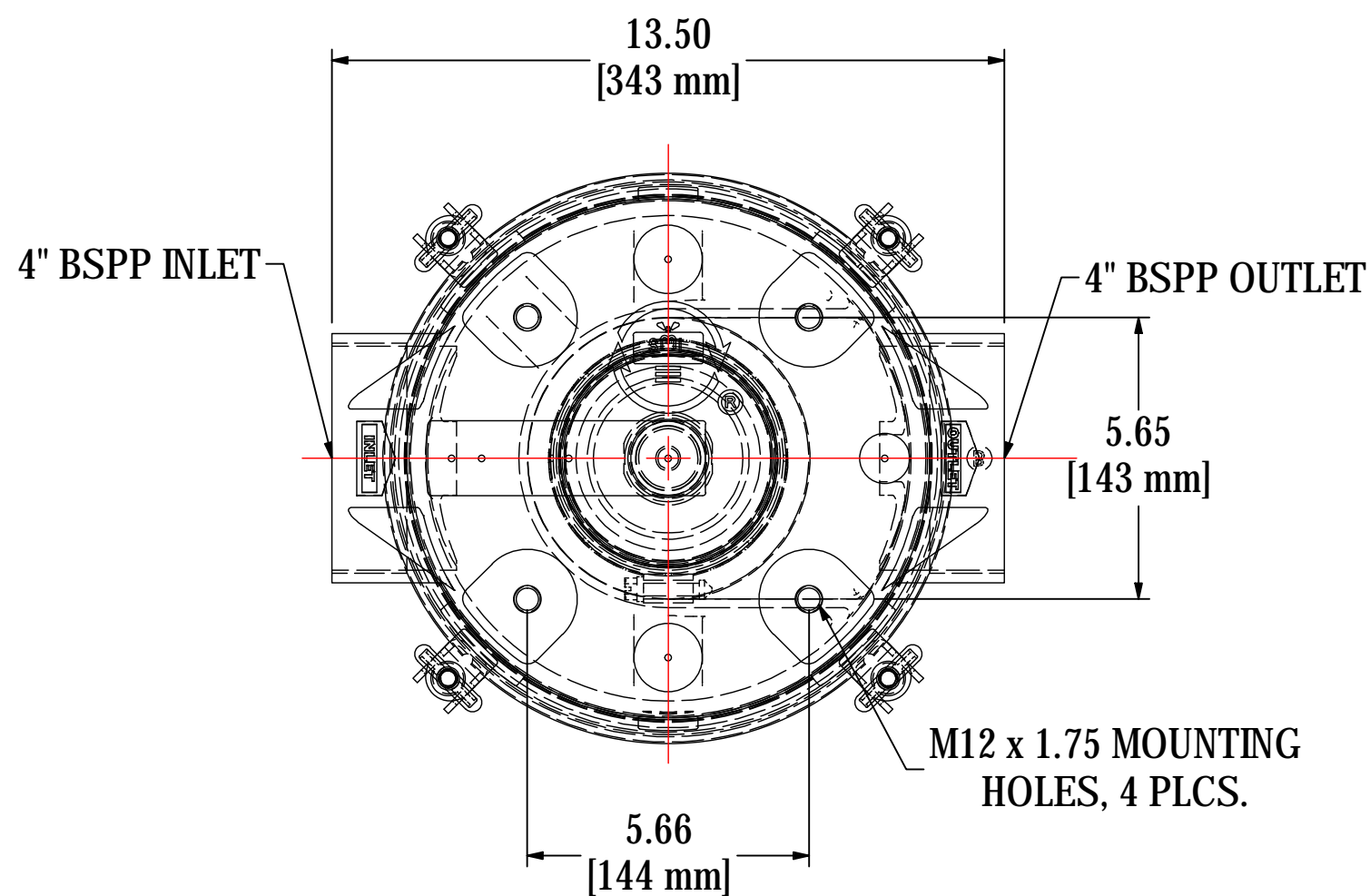


| REV | DESCRIPTION                               | ECN #   | CHG BY | DATE     | APP'D |
|-----|---|---------|--------|----------|-------|
| A   | UPDATED DRAIN DESIGN                      | 14725   | EZR    | 10/22/18 | TAS   |
| B   | UPDATED HARDWARE, ADDED FLOAT SEAL INSERT | 17082   | JEB    | 09/02/19 | TAS   |
| C   | UPDATED BUCKET DRAIN MATERIAL, WAS 316 SS | 21412   | AMM    | 03/08/21 | JSR   |
| D   | REMOVED NOTE                              | PRJ 682 | NAS    | 03/22/21 | EZR   |



|                                      |  |              |                                   |
|--------------------------------------|--|--------------|-----------------------------------|
| MODEL #: STS-401C                    | MATERIAL: CAST ALUMINUM/PLASTIC                                  | FINISH: NONE | SHEET: 1 OF 2                     |
| MODEL NUMBER: STS-401C               | DESCRIPTION: STS-401C, 1" BSPP POLYCARBONATE DRAIN, CLEAR BUCKET | PROJECT:     | DRAWN BY: JSR<br>DATE: 10/27/2015 |
| APPROVED BY: CRW<br>DATE: 10/27/2015 | REV: D   |              |                                   |