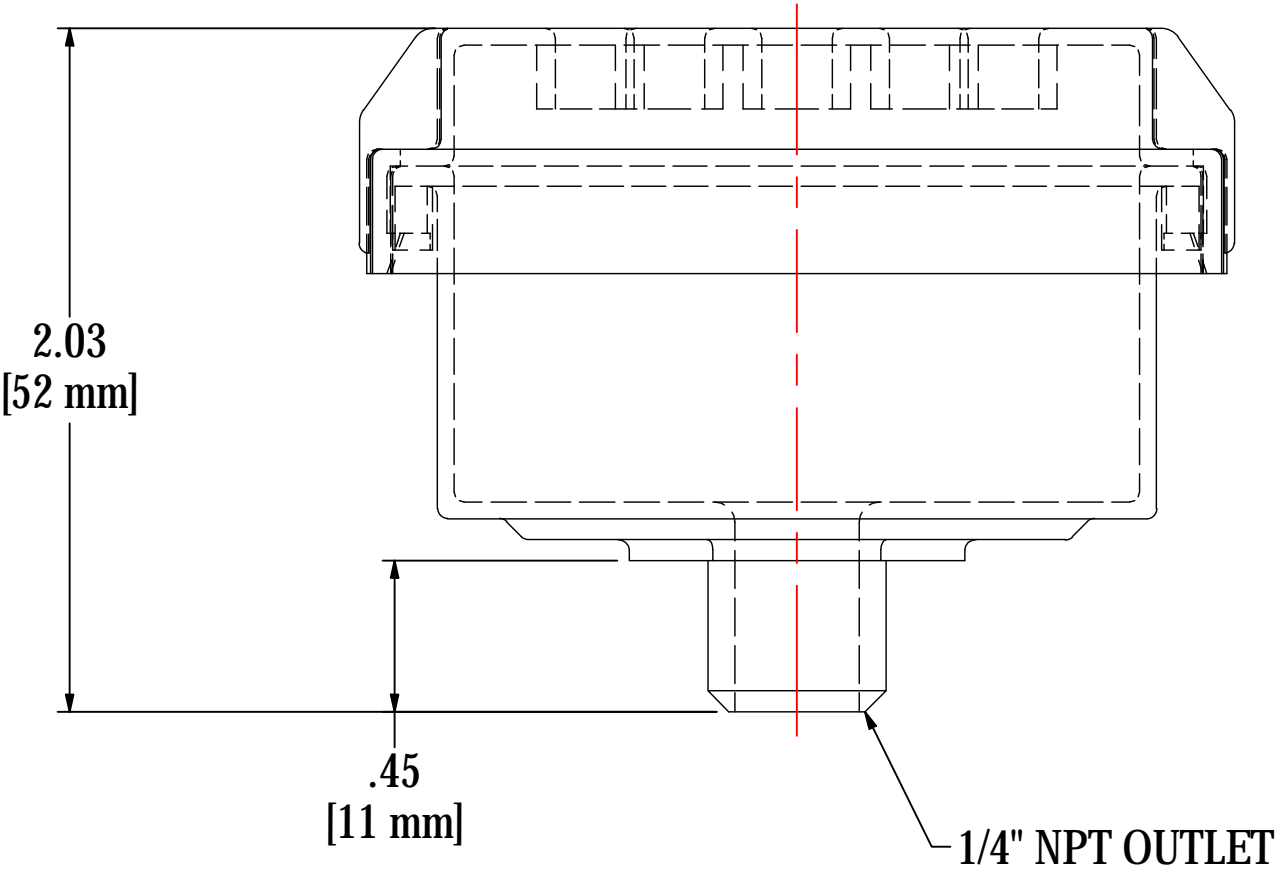
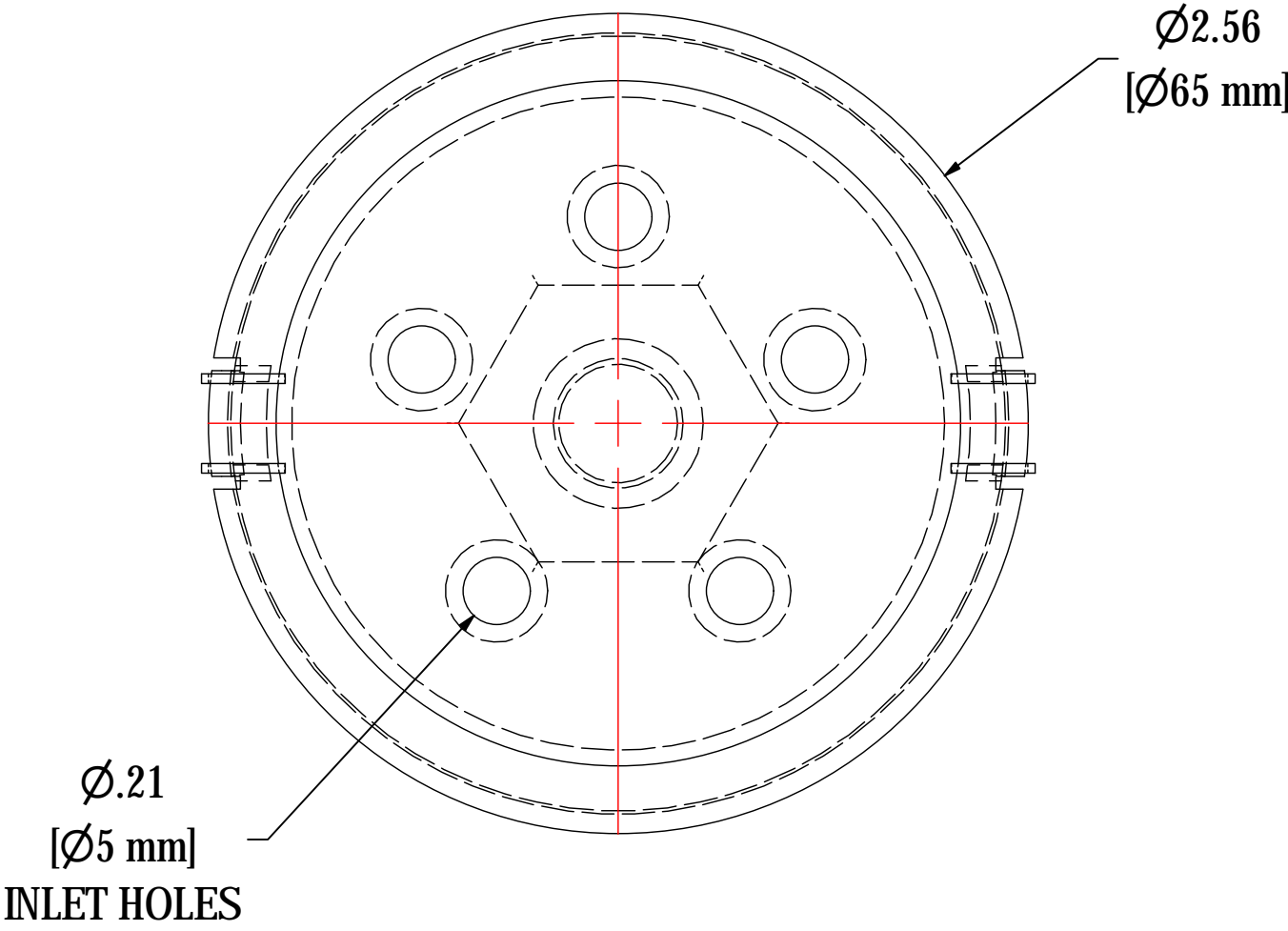


| REV | DESCRIPTION | ECN # | CHG BY | DATE | APP'D |
|-----|---|-------|--------|----------|-------|
| A | ADDED NOTE | - | CMA | 05/31/11 | M.C. |
| B | CHANGED TO 3D, REMOVED HE04 & 05 FROM DRAWING | 17893 | JEB | 12/09/19 | NAD |



| ELEMENT SPECS | | |
|---------------|---------------------|-----------------------|
| PART NUMBER | 04 | |
| MATERIAL | PAPER | |
| FLOW RATE | 8 CFM | 14 m ³ /hr |
| SURFACE AREA | 0.2 ft ² | 0.02 m ² |
| I.D. | N/A | N/A |
| O.D. | 2.38" | 60mm |
| HEIGHT | 1.00" | 25mm |

| | | | | | |
|--|--|--|--|--|-------------------------|
| MODEL #: PS-04-025 | | MATERIAL: 33% GLASS FILLED NYLON | | FINISH: NONE | |
| MODEL NUMBER: PS-04-025 | | | | | SHEET: 1 OF 1 |
| DESCRIPTION: PS-04-025, BLACK PLASTIC | | | | | |
| PROJECT: SD11113 | | DRAWN BY: ARA DATE: 8/13/2003 | | APPROVED BY: C.S. DATE: 8/13/2003 | |
| | | | | REV: B | |