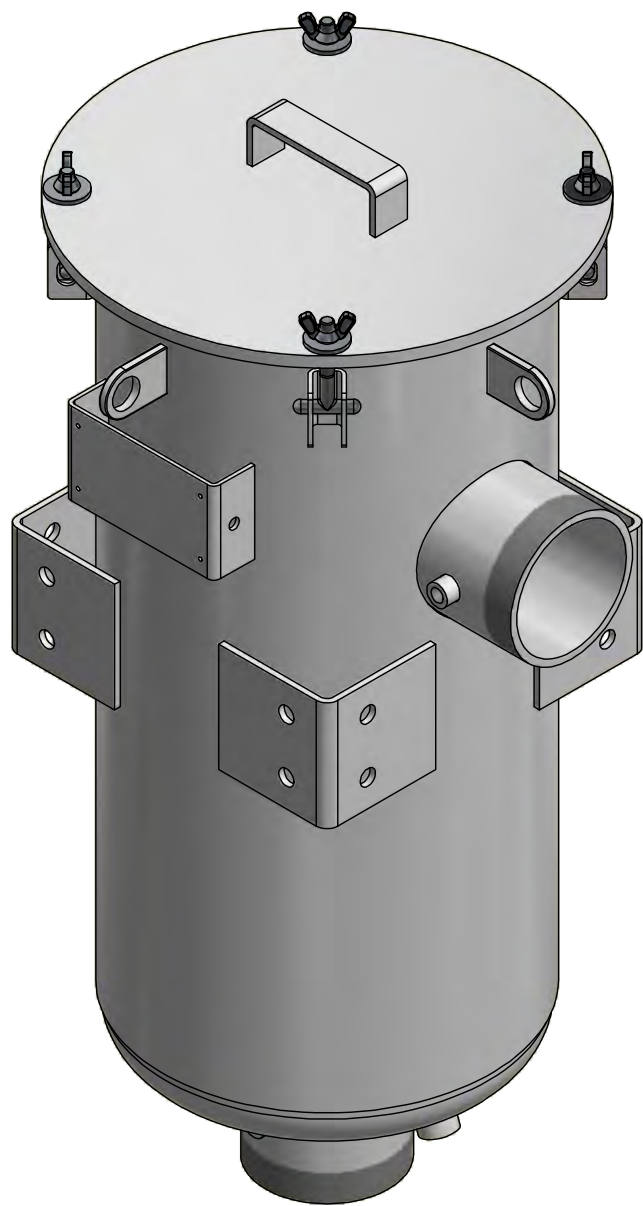
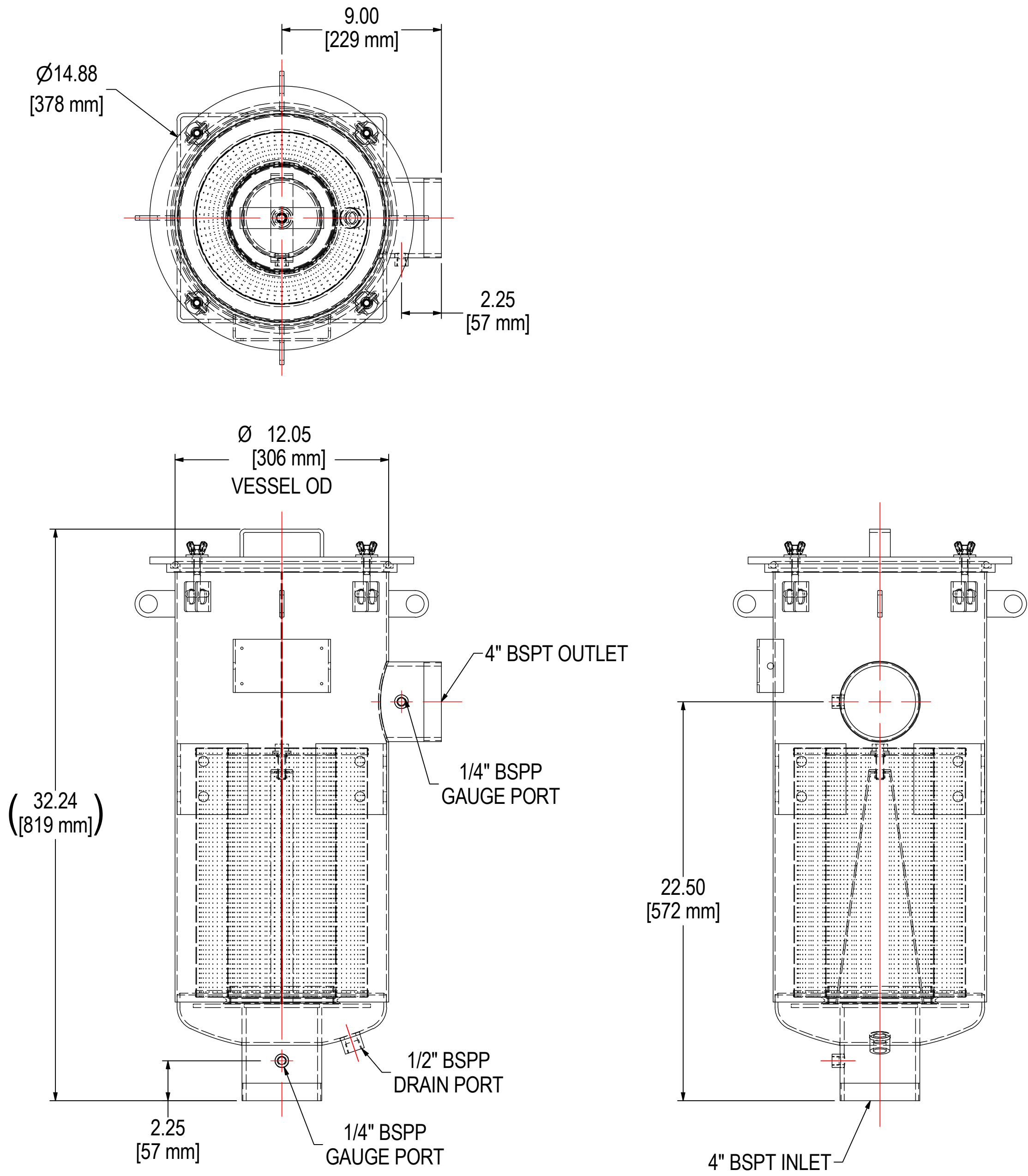


REV	DESCRIPTION	ECN #	CHG BY	DATE	APP'D
A	ADDED METRIC DATA, REVISED TANK ASSEMBLY	20990	JCB	11/29/11	M.C.
B	UPDATED TO 3D	-	JEB	02/22/19	DDH
C	UPDATED TO CURRENT LAYOUT	17860	NAD	12/04/19	TAS



ELEMENT SPECS		
PART NUMBER	PSG344/2	
MATERIAL	COALESCING	
FLOW RATE	500 CFM	850 m <sup>3</sup> /hr
SURFACE AREA	-	-
I.D.	6.00"	152mm
O.D.	9.75"	248mm
HEIGHT	14.06"	357mm

MODEL #: HDL-PSG344-2-401		MATERIAL: CARBON STEEL		FINISH: WHITE POWDER	
MODEL NUMBER: HDL-PSG344-2-401					SHEET: 1 OF 1
DESCRIPTION: HDL-PSG344/2-401, WHITE					
PROJECT:		DRAWN BY: CMA DATE: 2/2/2009		APPROVED BY: S.R. DATE: 2/2/2009	
				REV: C	