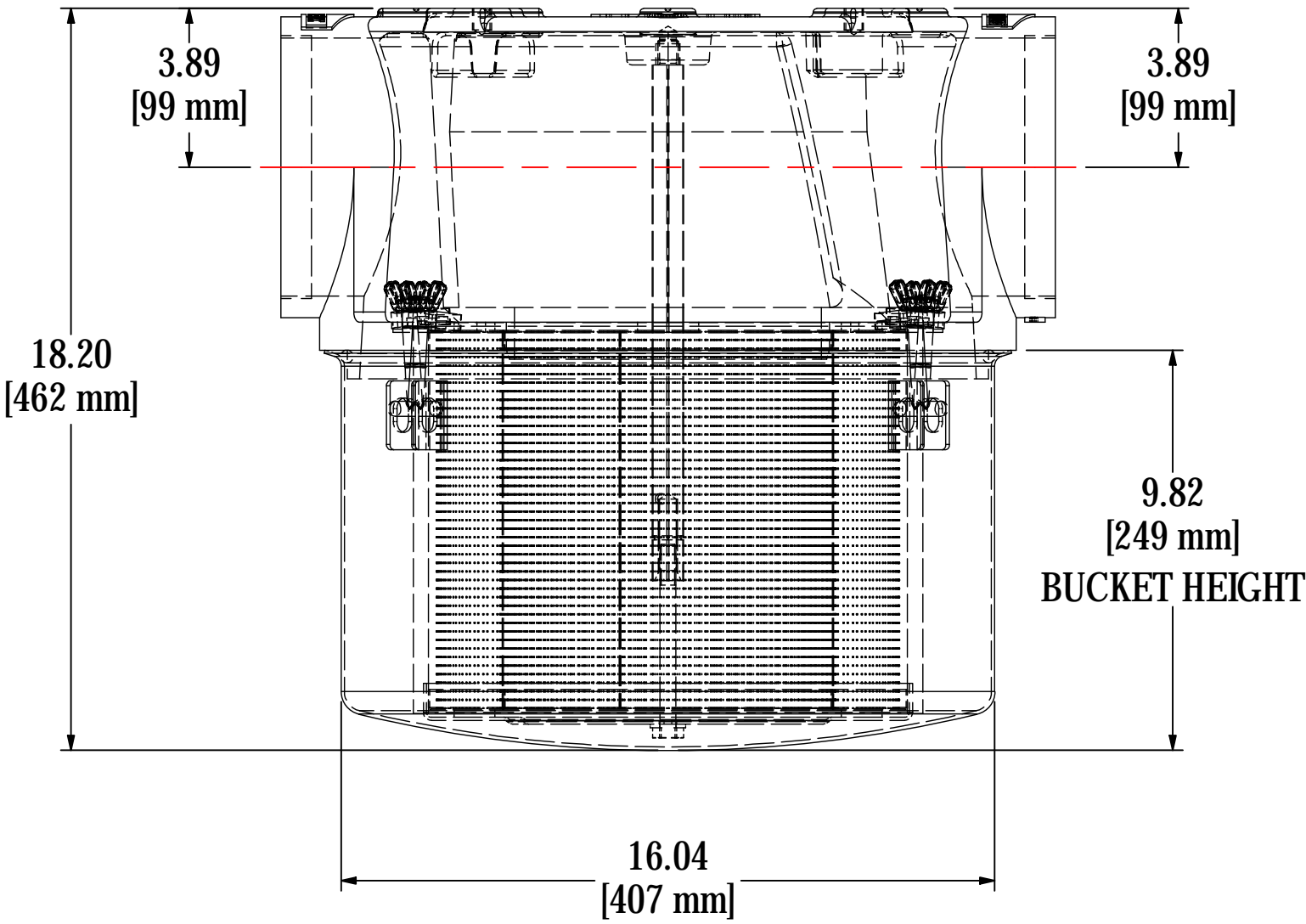
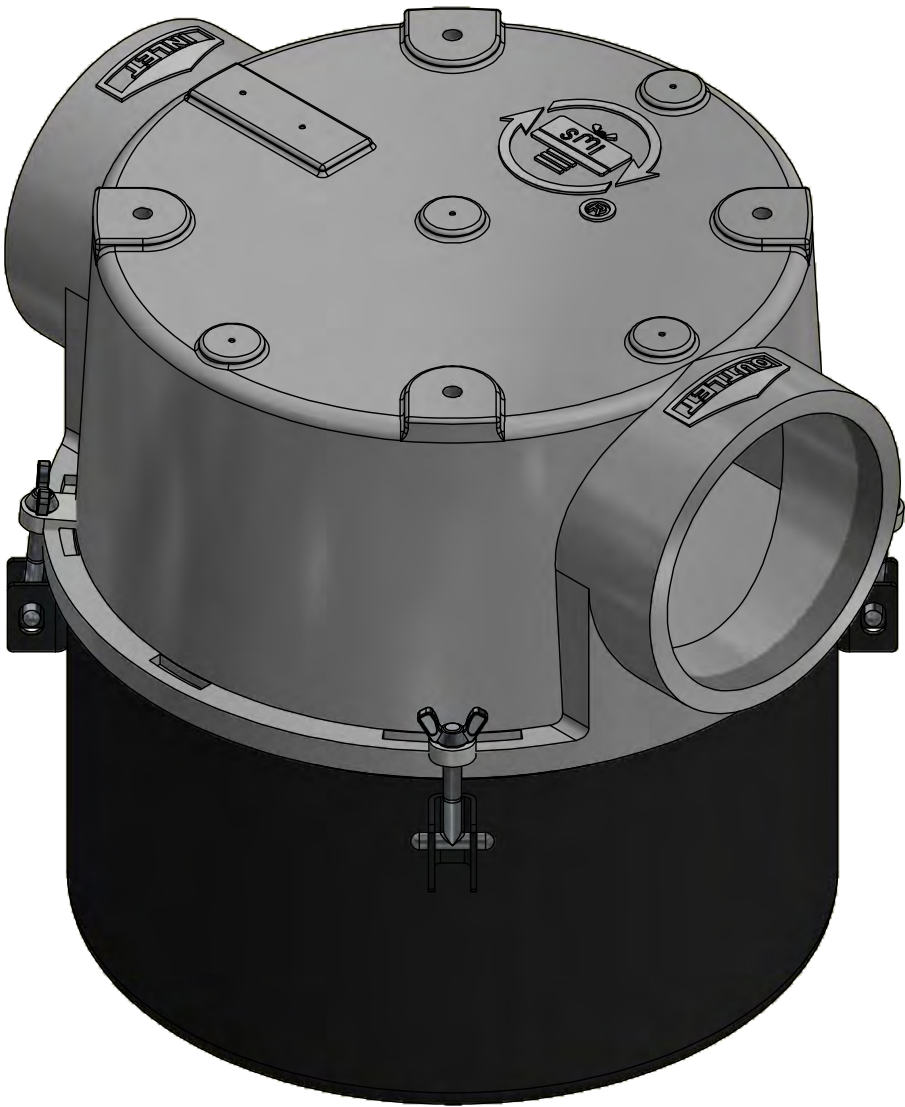
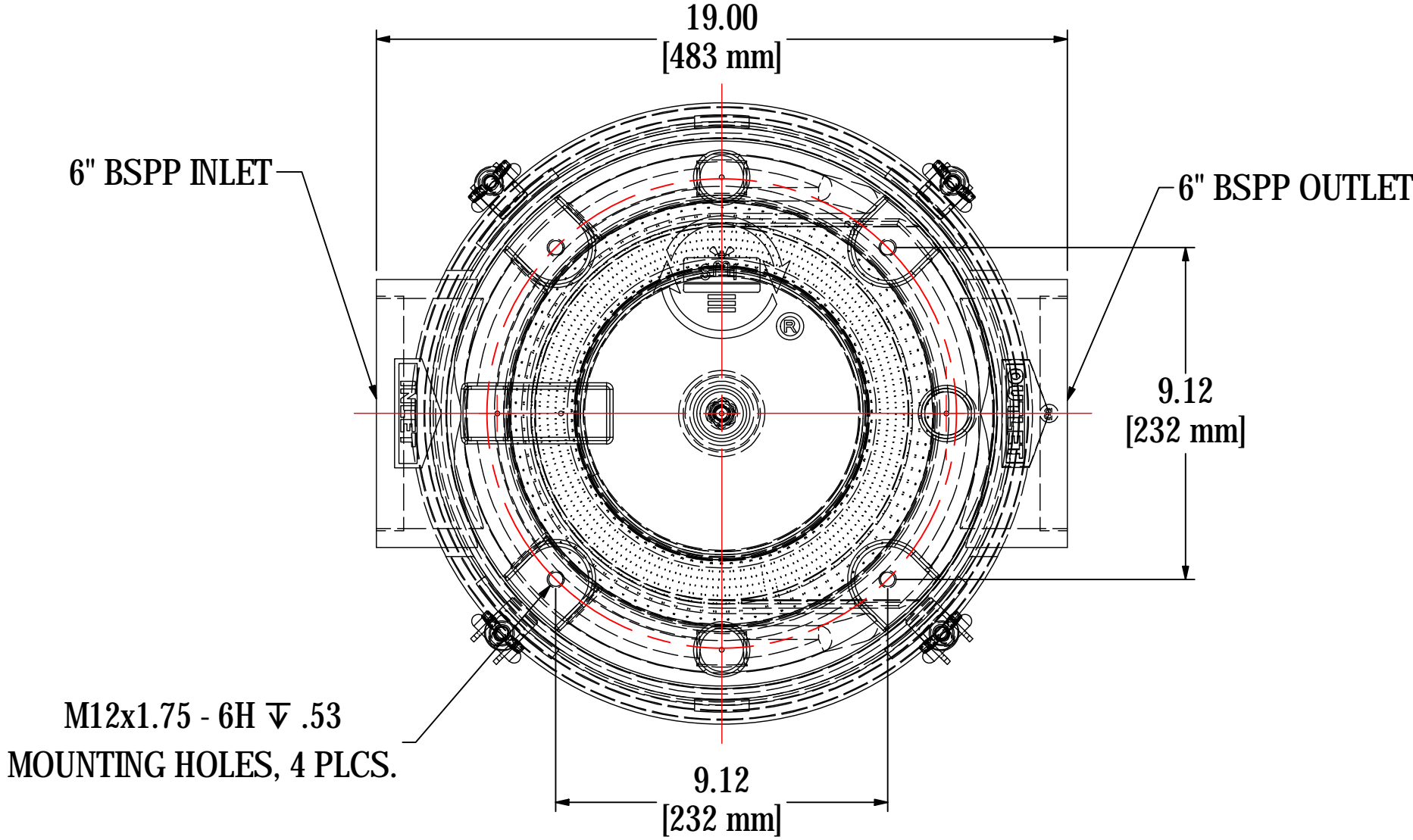


REV	DESCRIPTION	ECN #	CHG BY	DATE	APP'D
A	UPDATED CASTING DESIGN	16188	TAS	05/09/19	MJC



ELEMENT SPECS		
PART NUMBER	275P	
MATERIAL	Polyester	
FLOW RATE	1100 CFM	1869 m ³ /hr
SURFACE AREA	19.0 ft ²	1.8 m ²
I.D.	8.00"	203mm
O.D.	11.75"	298mm
HEIGHT	9.63"	245mm

MODEL #: CT-275P-601C		MATERIAL: CAST ALUMINUM/CARBON STEEL		FINISH: NONE/BLACK POWDER	
MODEL NUMBER: CT-275P-601C					SHEET: 1 OF 1
DESCRIPTION: CT-275P-601C, BLACK					
PROJECT:		DRAWN BY: CRW DATE: 3/29/2016		APPROVED BY: CRW DATE: 4/18/2014	
				REV: A	