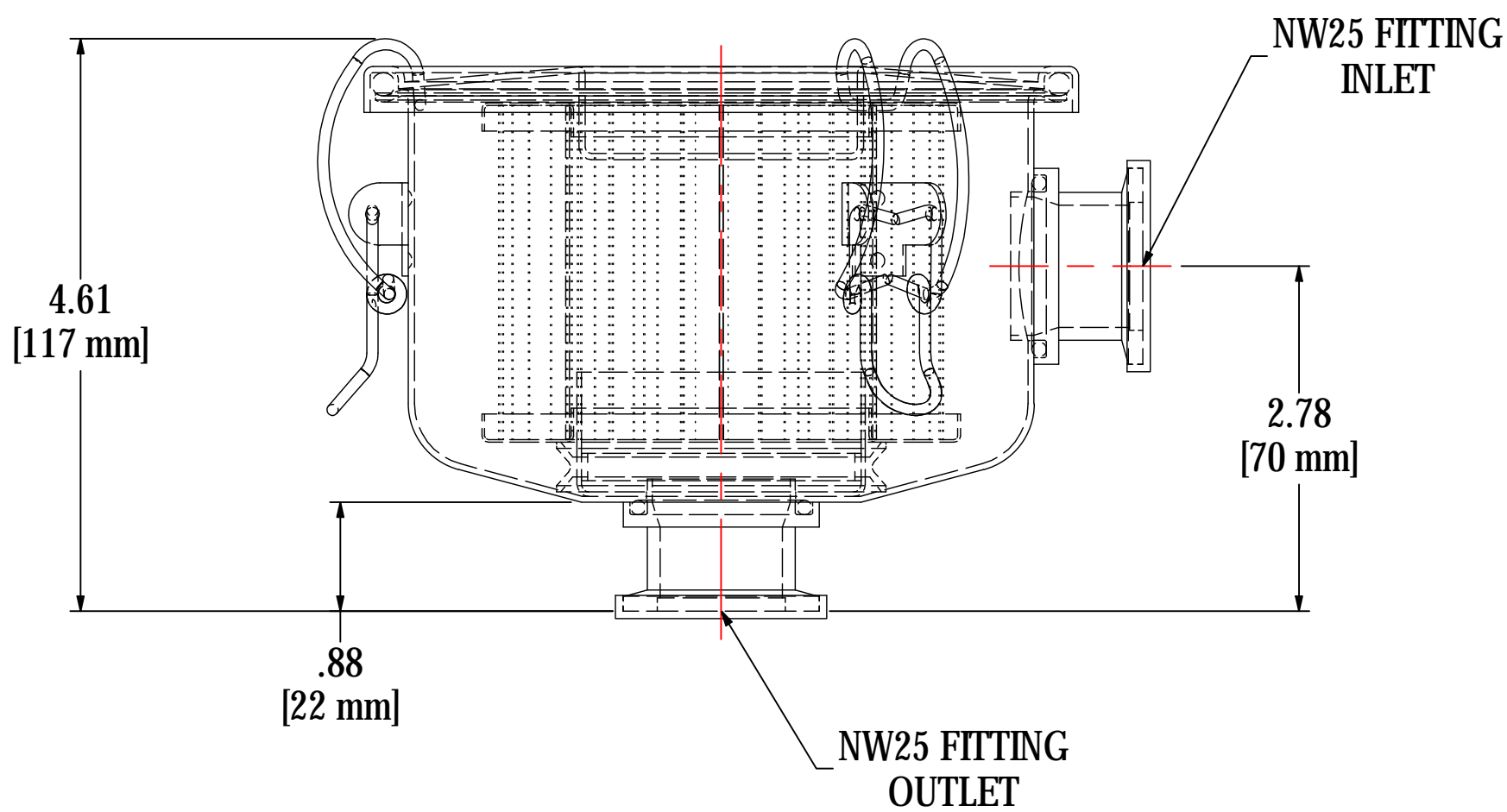
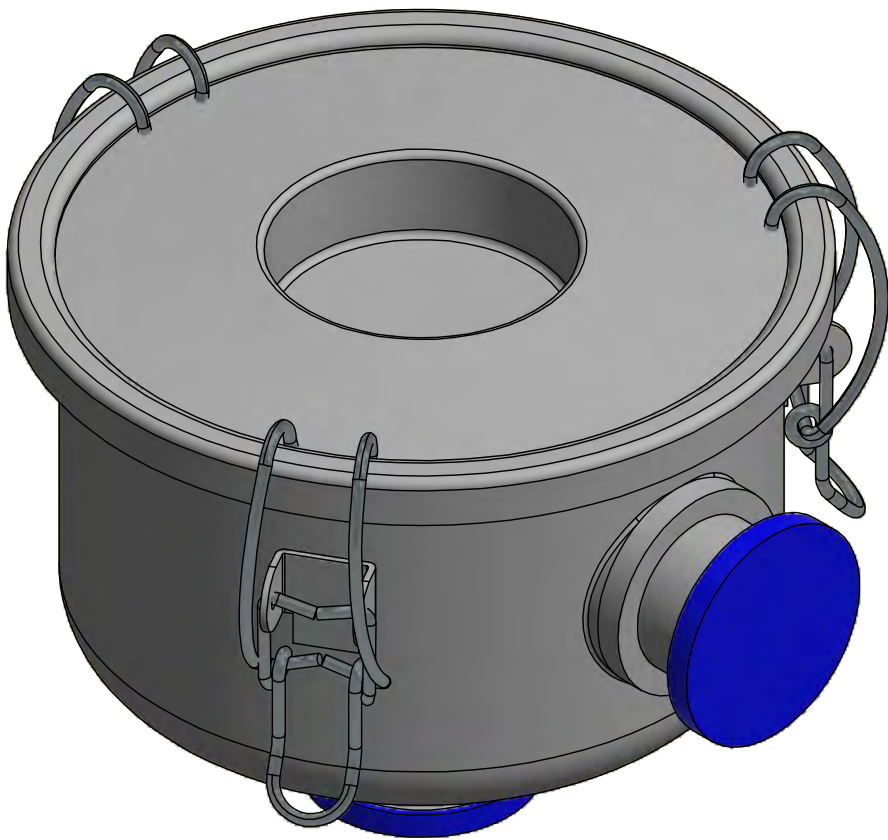
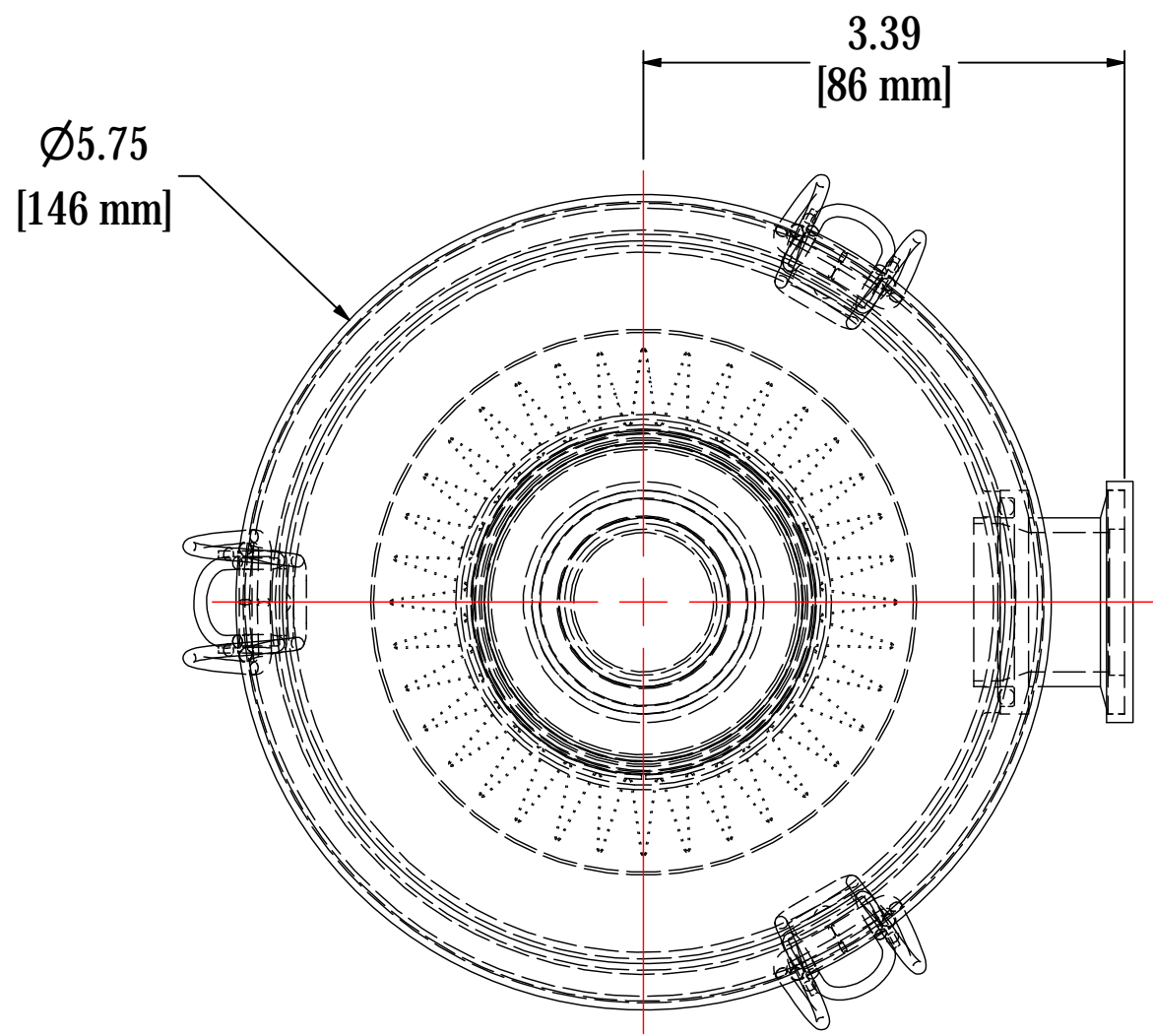


REV	DESCRIPTION	ECN #	CHG BY	DATE	APP'D
A	CONVERTED TO 3D; CHANGED PART NUMBER, WAS CSL	15725	TAS	03/11/19	EZR
B	UPDATED TO CURRENT STYLE	18198	JSR	01/23/20	JSR



NOTES & SPECIFICATIONS:

1. PROTECT FLANGES DURING PRODUCTION & SHIPMENT.
2. UNIT TO BE HELIUM LEAK TESTED TO 1 x 10-5 mbar L/s.

ELEMENT SPECS		
PART NUMBER	843	
MATERIAL	POLYESTER	
FLOW RATE	55 CFM	93 m³/hr
SURFACE AREA	0.6 ft²	0.1 m²
I.D.	2.38"	60mm
O.D.	3.85"	98mm
HEIGHT	2.73"	69mm

MODEL #: WL-843-NW25EN		MATERIAL: CARBON STEEL		FINISH: ELECTROLESS NICKEL	
MODEL NUMBER: WL-843-NW25EN					SHEET: 1 OF 1
DESCRIPTION: WL-843-NW25EN, ELECTROLESS NICKEL					
PROJECT: SD18547		DRAWN BY: CRW DATE: 4/25/2012		APPROVED BY: M.C. DATE: 4/25/2012	
				REV B	



SOLBERG®
Filtration • Separation • Silencing
630.773.1363 • www.solbergmfg.com

THE INFORMATION CONTAINED HEREIN IS CONFIDENTIAL AND THE PROPERTY OF SOLBERG MANUFACTURING INC. AND IT IS FURNISHED TO YOU WITH THE EXPRESS UNDERSTANDING THAT IT WILL NOT BE REPRODUCED, COPIED IN ANY MANNER, LOANED OR OTHERWISE TRANSFERRED TO OTHERS ENTIRELY OR IN PART, NOR USED FOR ANY PURPOSE OTHER THAN FOR WHICH IT WAS FURNISHED. IT WILL BE RETURNED UPON REQUEST TO SOLBERG MANUFACTURING INC. THE ABOVE RESTRICTION IS IN ADDITION TO, AND DOES NOT IN ANY WAY ALTER, ANY OTHER RESTRICTIONS WHICH MAY APPLY TO THE INFORMATION CONTAINED HEREIN.

TOLERANCES
DIMENSIONS ARE FOR REFERENCE ONLY. ALL DIMENSIONS ARE SUBJECT TO CHANGE UPON PRODUCTION.
UNLESS OTHERWISE SPECIFIED:
-DIMENSIONS ARE IN INCHES
-REF: APPROXIMATE DIMENSIONS, NO TOLERANCES APPLY
-FINISH: BREAK EDGES TO .005-.020 RADIUS/CHAMFER