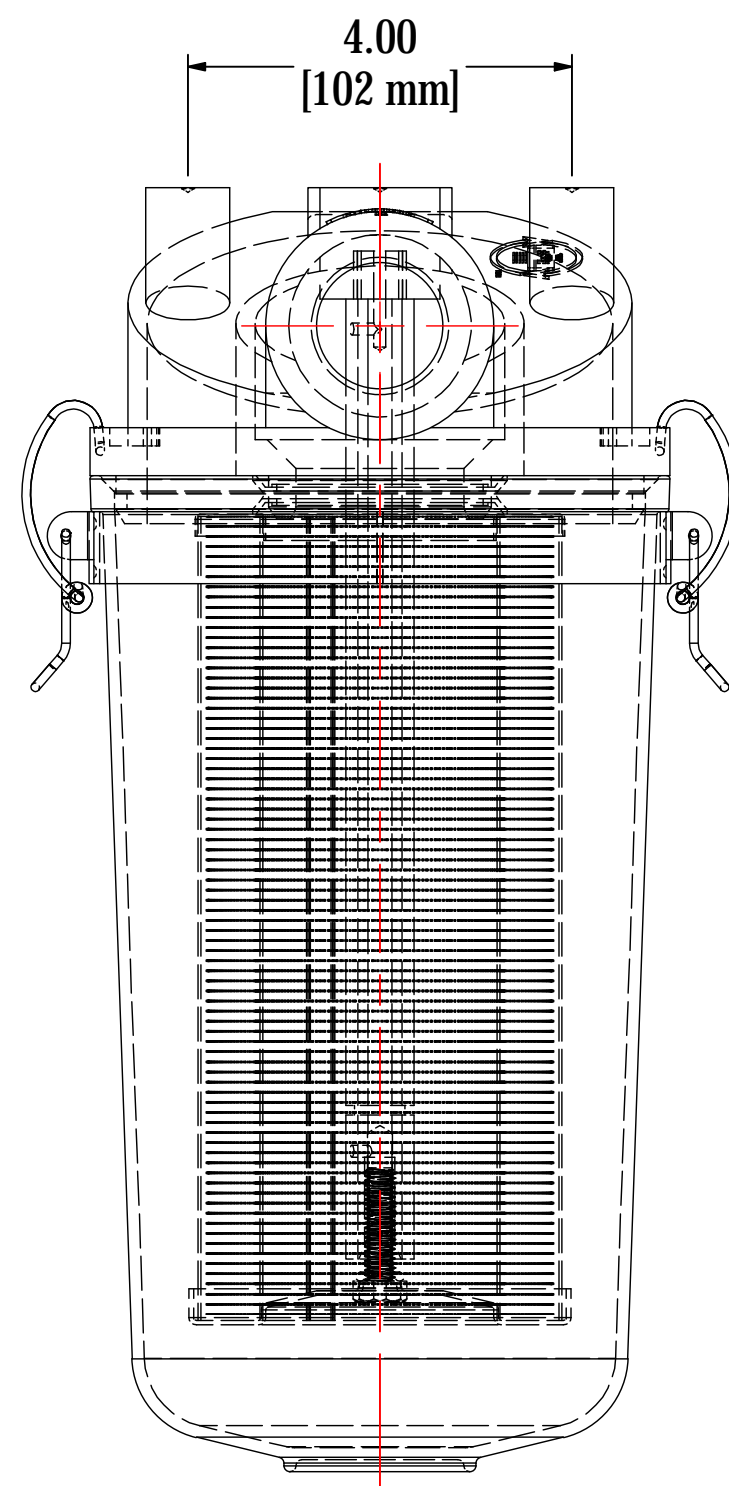
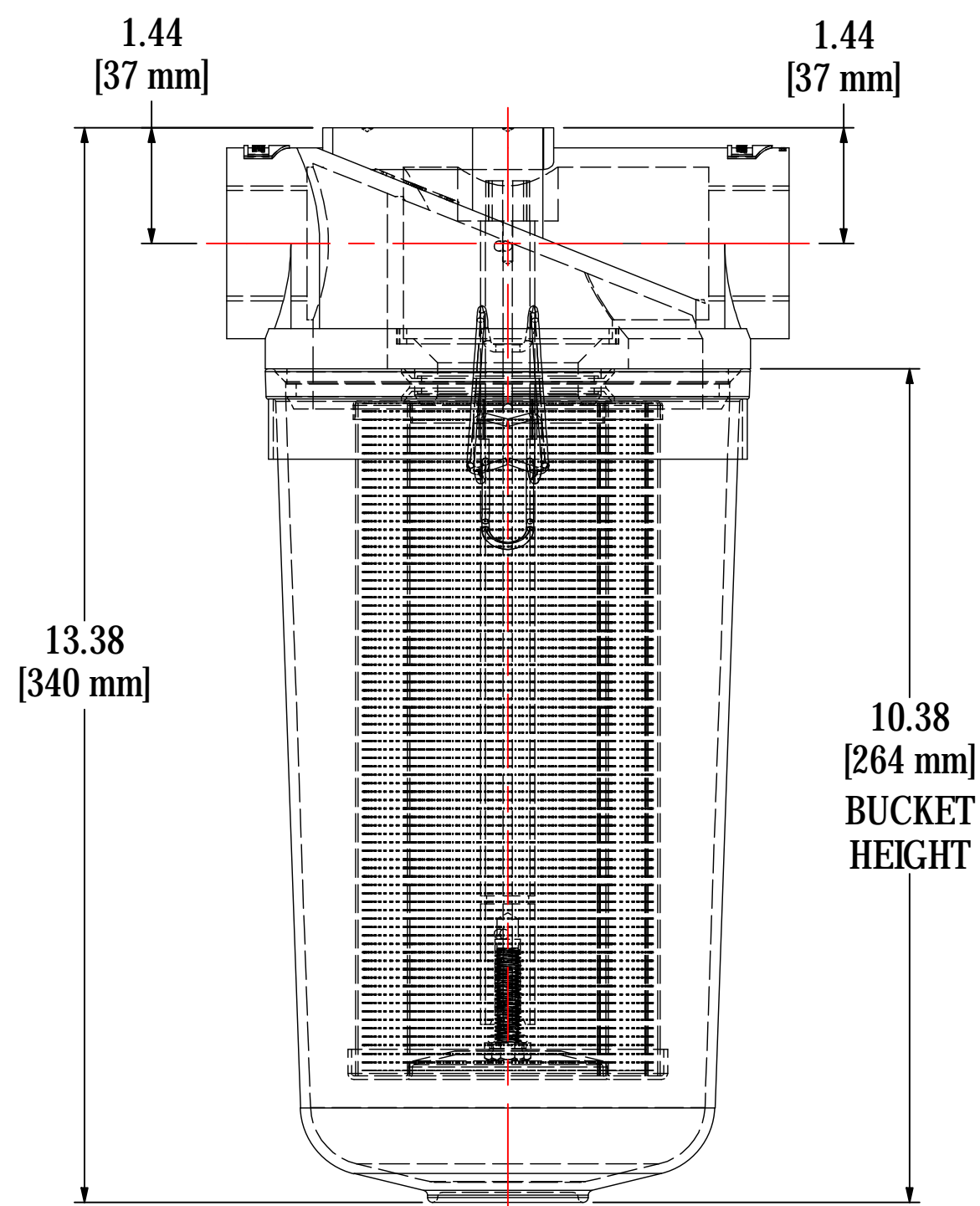
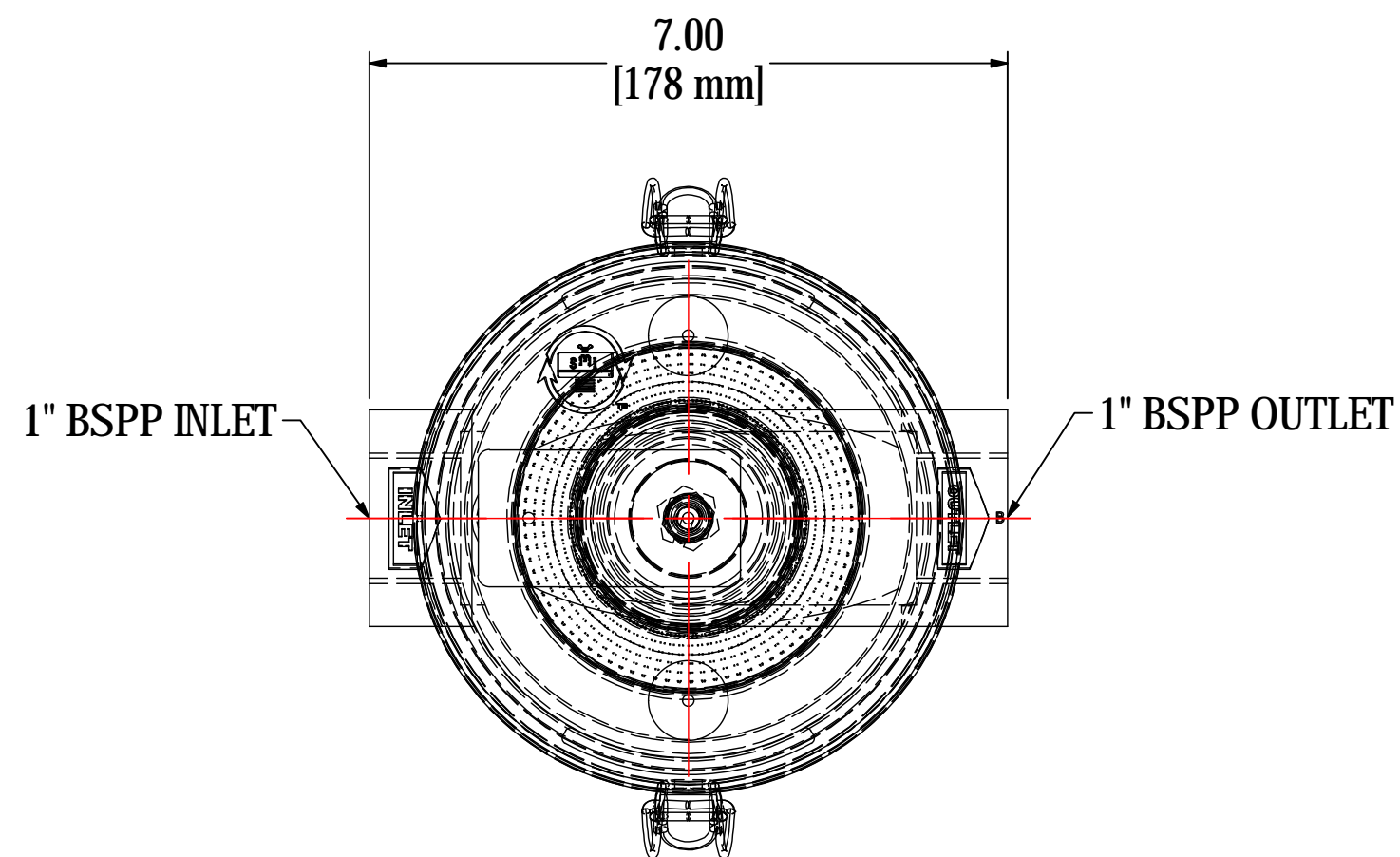


REV	DESCRIPTION	ECN #	CHG BY	DATE	APP'D
A	UPDATED STANDARD DRAWING LAYOUT	17648	TAS	11/08/19	NAD



ELEMENT SPECS		
PART NUMBER	896	
MATERIAL	PAPER	
FLOW RATE	80 CFM	136 m ³ /hr
SURFACE AREA	5.0 ft ²	0.5 m ²
I.D.	2.38"	60mm
O.D.	3.98"	101mm
HEIGHT	8.44"	214mm

MODEL #: ST-896-101C		MATERIAL: CAST ALUM/POLYCARB		FINISH: NONE	
MODEL NUMBER: ST-896-101C					SHEET: 1 OF 1
DESCRIPTION: ST-896-101C, CLEAR BUCKET					
PROJECT: SD17958		DRAWN BY: CRW DATE: 3/27/2012		APPROVED BY: M.C. DATE: 3/27/2012	
				REV: A	