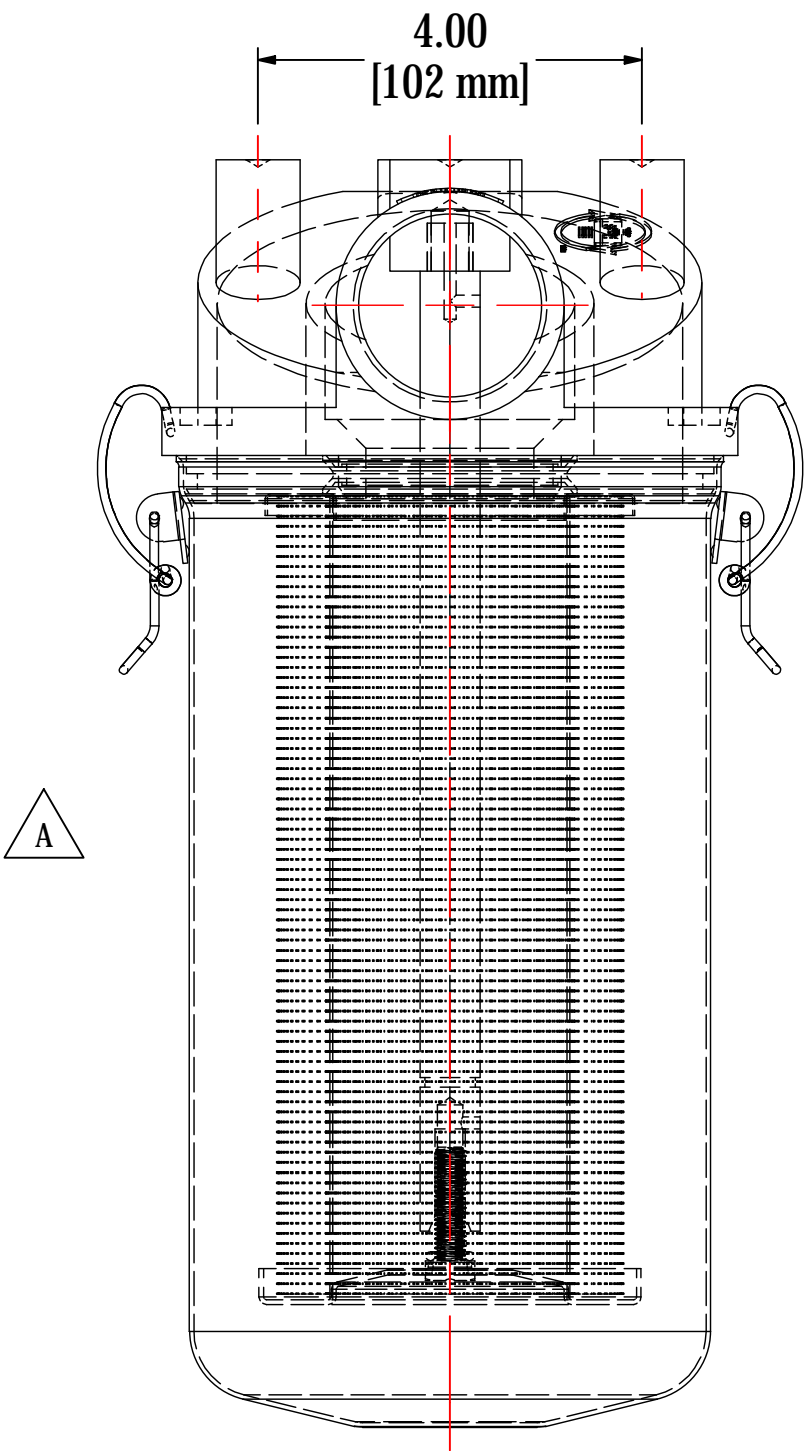
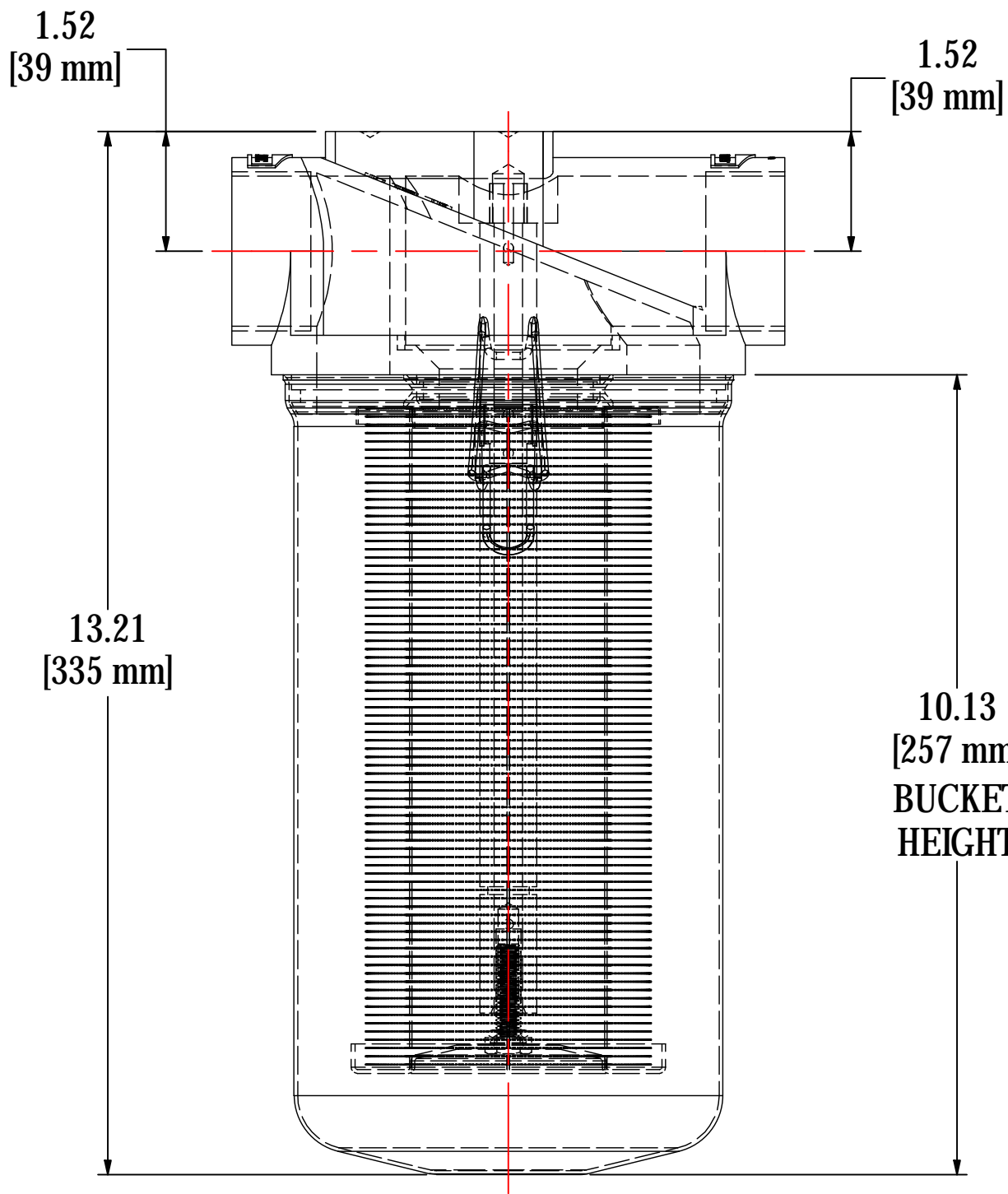
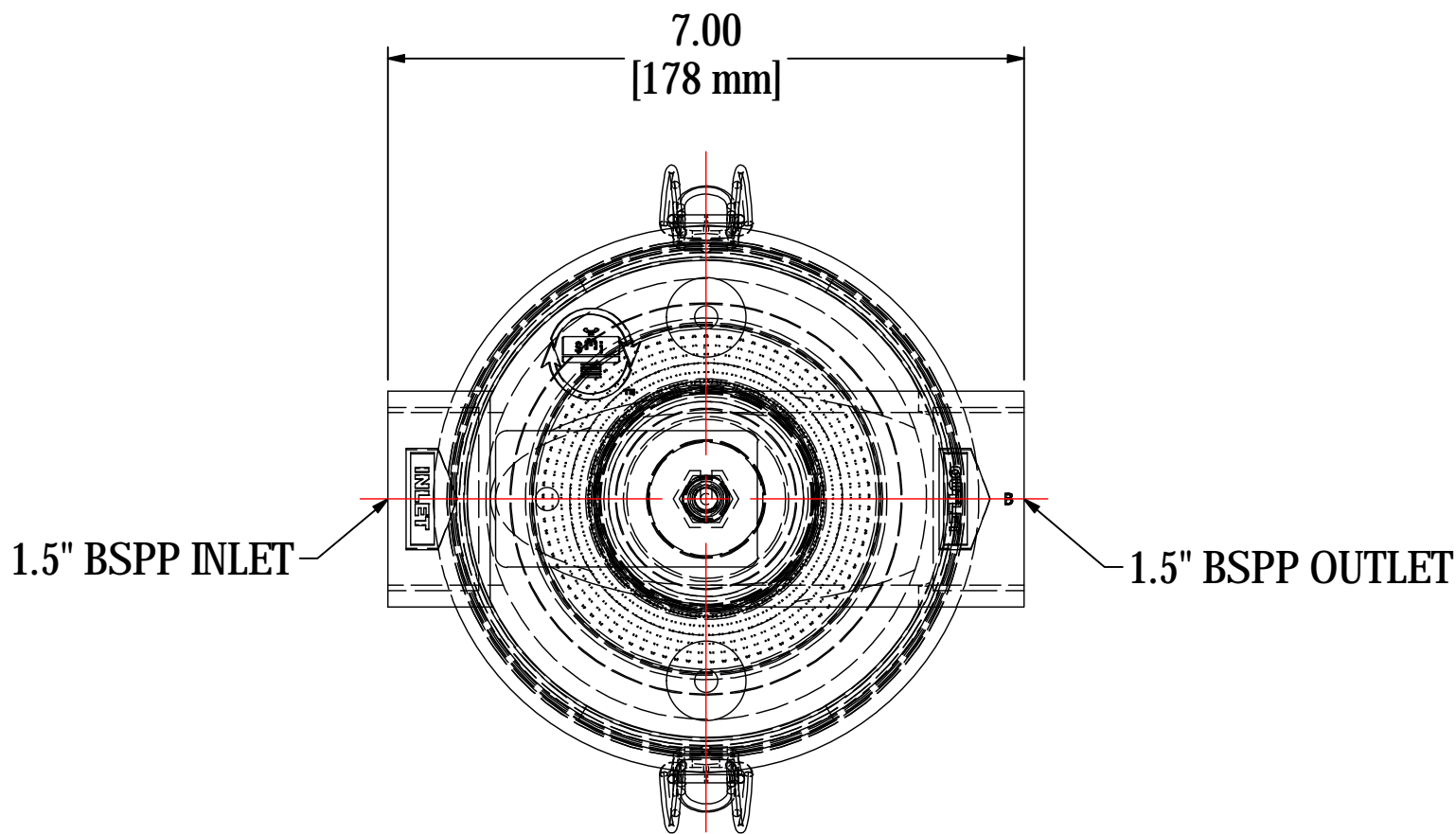


REV	DESCRIPTION	ECN #	CHG BY	DATE	APP'D
A	CREATED SIDE VIEW	WEB	RWK	10/03/19	NAD



ELEMENT SPECS		
PART NUMBER	897	
MATERIAL	Polyester	
FLOW RATE	80 CFM	136 m ³ /hr
SURFACE AREA	2.1 ft ²	0.2 m ²
I.D.	2.38"	60mm
O.D.	3.98"	101mm
HEIGHT	8.44"	214mm

MODEL #: CT-897-151C		MATERIAL: CAST ALUMINUM/CARBON STEEL		FINISH: NONE/BLACK POWDER	
MODEL NUMBER: CT-897-151C					SHEET: 1 OF 1
DESCRIPTION: CT-897-151C, BLACK					
PROJECT: SD21104		DRAWN BY: CRW DATE: 10/24/2014		APPROVED BY: M.C. DATE: 10/24/2014	
				REV: A	