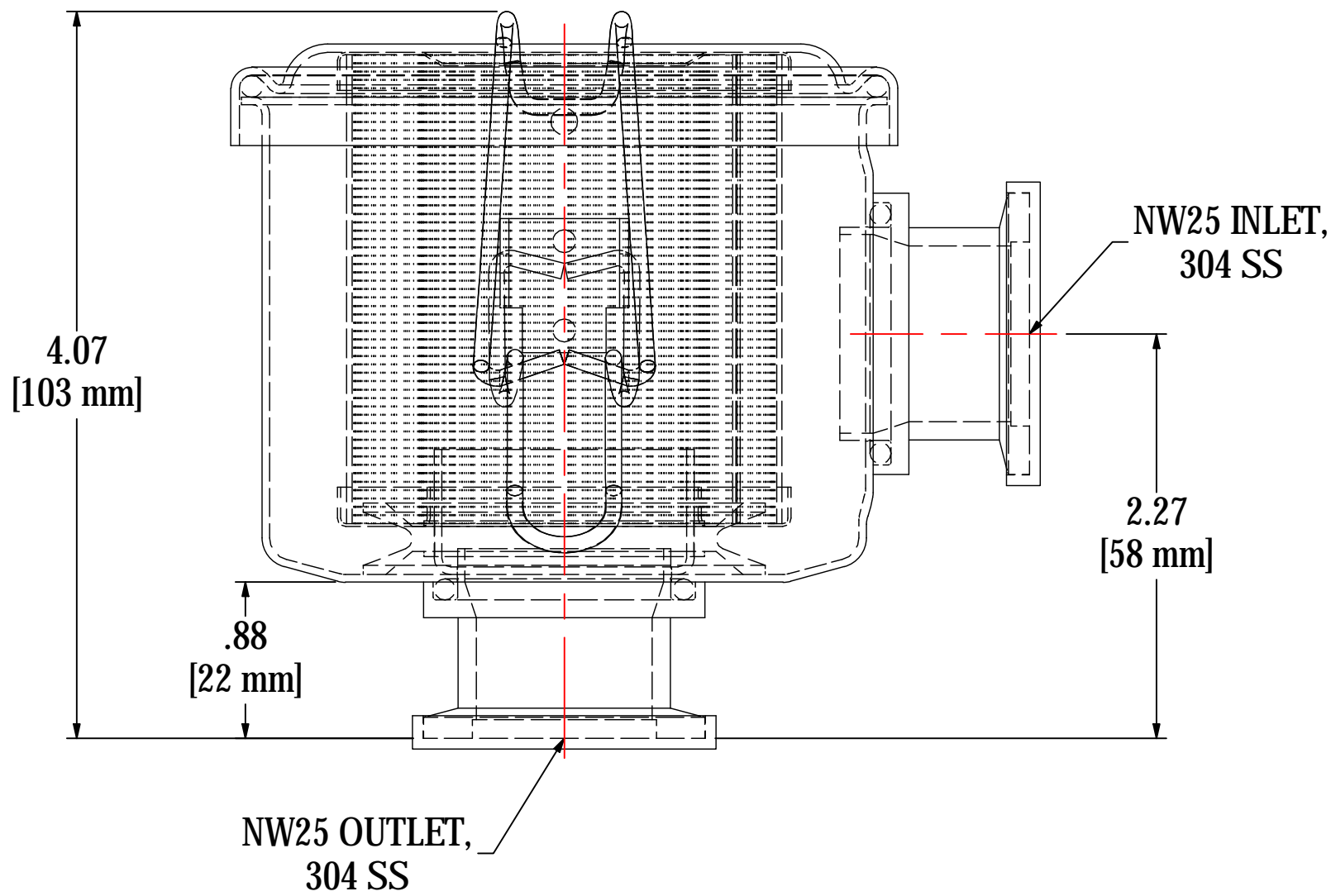
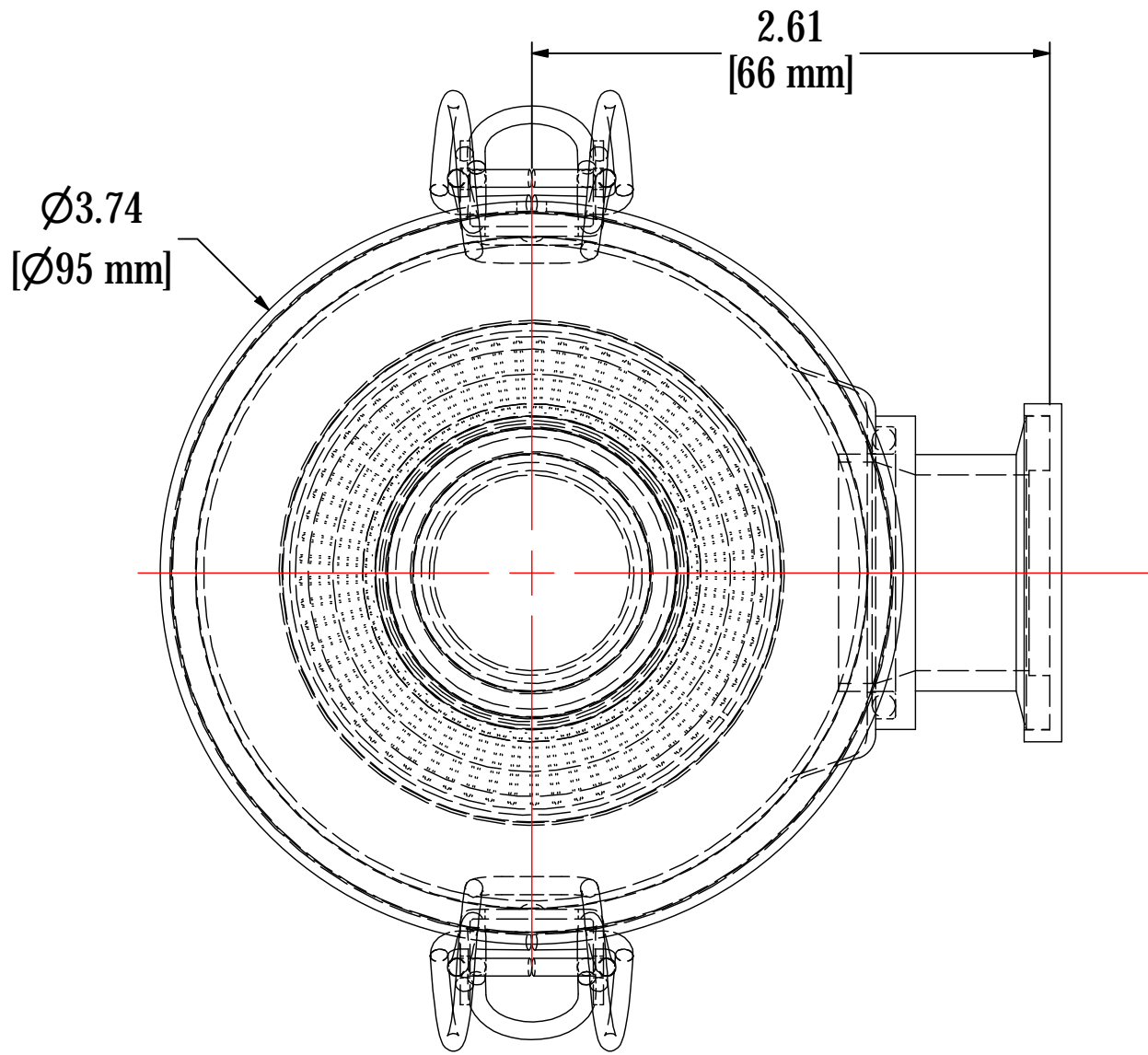


REV	DESCRIPTION	ECN #	CHG BY	DATE	APP'D
A	CONVERTED TO 3D	-	CRW	02/03/16	MJC
B	UPDATED PART NUMBER, WAS CSL	17295	EZR	09/26/19	TAS



**NOTES & SPECIFICATIONS:**

1. FLANGES TO BE PROTECTED DURING PRODUCTION & SHIPMENT.
2. UNIT TO BE HELIUM LEAK TESTED TO 1 x 10<sup>-5</sup> mbar L/s.

ELEMENT SPECS		
PART NUMBER	824	
MATERIAL	PAPER	
FLOW RATE	25 CFM	42 m³/hr
SURFACE AREA	0.8 ft²	0.1 m²
I.D.	1.50"	38mm
O.D.	2.54"	65mm
HEIGHT	2.65"	67mm

MODEL #: WL-824-NW25B		MATERIAL: CARBON STEEL		FINISH: BLACK POWDER	
MODEL NUMBER: WL-824-NW25B					SHEET: 1 OF 1
DESCRIPTION: WL-824-NW25B, BLACK					
PROJECT: SD19005		DRAWN BY: CRW DATE: 2/11/2014		APPROVED BY: MJC DATE: 2/11/2014	
				REV: B	